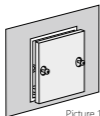




# Wall AP Quick Installation Guide

This document is for Wall AP only. The device should be installed wall-mounted, here is the simple installation method.

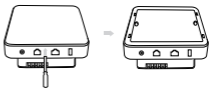
## Step 1: Open the wall plate cover



Picture 1

Remove the box from the wall with a screwdriver, as shown in picture 1.

## Step 2: Pry open the front panel of AP

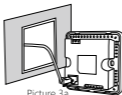


Picture 2

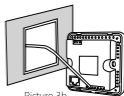
Pry open the AP front panel with a word screwdriver, as shown in picture 2.

## Step 3: Cable installation

Insert the connectors of the uplink (PoE) and passthrough 2 cables into the corresponding ports, install the AP on the bracket, as shown in picture 3a. If port RJ45 is not use, please use a dedicated cable punch to install the cable into the slot according to the sequence of the wire coloring on the bottom cover of the AP, as shown in picture 3b.



Picture 3a



Picture 3b

## Step 4: Fixing AP

Tighten the screws and fix the AP on the panel, as shown in picture 4. In order to avoid equipment damage, tightening efforts must be strengthened. Less than twenty kilos.



Picture 4

## Step 5: Connect the power

Cover the front panel of AP in order ,  
The Wall AP uses two power modes:  
Local power supply or PoE power supply.



Picture 5

# The Initial Configuration of VAP

When the VAP is connected to a DHCP network it will automatically obtain an IP address and discover the AC through broadcast. In general local applications, we do not need to specify the Local AC IP address for the VAP; on the other hand, we can also specify the Local AC/Central AC IP address for the VAP, and in certain environments (AP to AC cross-NAT), we have to specify the Local AC/Central AC IP address for the VAP.

The initial configurations of VAP are as shown below:

- When the VAP is powered up it will by default broadcast the SSID "abloomy\_mac", as shown below: `Abloomy_60:cd:a9:00:16:4d`
- Connect your laptop to the SSID and manage the VAP through SSH (use SSH software like Xshell), the management ip is 10.0.0.1, as shown below: `[c:\~]$ ssh 10.0.0.1`  
Also access `http://10.0.0.1:9000` from the browser
- Follow the prompts to enter username: `admin` and password: `admin`. After login successfully, type "shell" at the command line and press enter, use the following command to specify the remote Central AC/Local AC IP (for example:192.168.100.21) address for the VAP:  
`Abloomy> set csip 192.168.100.21`

Have the VAP connected to the network after the completion of the above steps.

Detailed configuration of WLAN, Radio and so on should be configured on the graphical page of Local AC/Central AC.

## Online Resources

Please log in [www.abloomy.com](http://www.abloomy.com) to get the technical documents, or contact our technical engineer by email([service@abloomy.com.cn](mailto:service@abloomy.com.cn)). Before you send it, Please contact our Service to make sure malfunction of devices and warranty period first, Service Tel: +001-888-690-7008

We will publish the new products and software on our official website in the first time.

## Abloomy Technologies Inc.

**Headquarters:** 21423 SHANNON CT, CUPERTINO, CA 95014, USA

**Branch:** 3rd Floor, CST Building, A1 Beishatan, Chaoyang District, Beijing, P.R.China

**Toll Free Number:** +001-888-690-7008

**Website:** [www.abloomy.com](http://www.abloomy.com)

**E-mail:** [abloomy@abloomy.com](mailto:abloomy@abloomy.com)