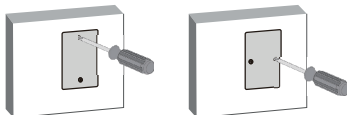


This document is for Wall AP only. The device should be installed wall-mounted, here is the simple installation method

## Step 1: Open the wall plate cover

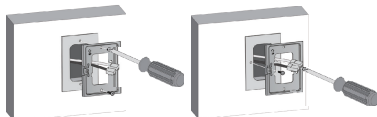
Remove the box from the wall with a screwdriver, as shown in picture 1.



Picture 1

## Step 2: Install bracket

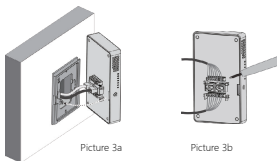
Please connect the uplink (PoE) and passthrough cables through the hole in the middle of the bracket as shown in picture 2. The "UP" arrow on the bracket points upward. Fix the bracket on the wall panel box and use a screwdriver to attach the 2 screws. Screws are fixed to the top/bottom or left/right screw holes of the wall panel box.



Picture 2

## Step 3: Cable installation

Insert the connectors of the uplink (PoE) and passthrough 2 cables into the corresponding ports, install the AP on the bracket, as shown in picture 3a. If port RJ45 is not use, please use a dedicated cable punch to install the cable into the slot according to the sequence of the wire coloring on the bottom cover of the AP, as shown in picture 3b.

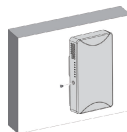


Picture 3a

Picture 3b

## Step 4: Fixing

Tighten the screw to fix the AP on the bracket, as shown in picture 4. In order to avoid the equipment damaged, the strength of the tightening must be controlled within 20 kilograms.

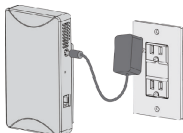


Picture 4

## Step 5: Connect the power

The Wall AP uses two power modes: Local power supply or PoE power supply.

- Local power supply: Use a power adapter (buy separately).
- PoE power supply: Use PoE-powered switch or external PoE power adapter (buy separately). 802.3af/at standard.



Picture 5